

EDMUND

NOVEMBER 2016



MODEL: RACHEL INGVALSON
PHOTOGRAPHY: JEFF KAPPEL
HAIR & MAKE-UP: KARLA AYALA
WARDROBE: JOSE AYALA



EDITORIAL

A COLLECTION OF FASHION IMAGERY

NOVEMBER 2016

MODEL: RACHEL INGOALSON
PHOTOGRAPHY: JEFF KAPPEL
HAIR & MAKE-UP: KARLA AYALA
WARDROBE: JOSE AYALA



MODEL: RACHEL INGVALSON
PHOTOGRAPHY: JEFF KAPPEL
HAIR & MAKE-UP: KARLA AYALA
WARDROBE: JOSE AYALA



MODEL: RACHEL INGVALSON
PHOTOGRAPHY: JEFF KAPPEL
HAIR & MAKE-UP: KARLA AYALA
WARDROBE: JOSE AYALA



MODEL: RACHEL INGVALSON
PHOTOGRAPHY: JEFF KAPPEL
HAIR & MAKE-UP: KARLA AYALA
WARDROBE: JOSE AYALA



MODEL: RACHEL INGVALSON
PHOTOGRAPHY: JEFF KAPPEL
HAIR & MAKE-UP: KARLA AYALA
WARDROBE: JOSE AYALA



MODEL: RACHEL INGVALSON
PHOTOGRAPHY: JEFF KAPPEL
HAIR & MAKE-UP: KARLA AYALA
WARDROBE: JOSE AYALA



MODEL: LAUREN MCGEE
PHOTOGRAPHY: DANNY WOODWARD
DESIGNER: SOPHIE MIRANDA LEA



MODEL: LAUREN MCGEE
PHOTOGRAPHY: DANNY WOODWARD
DESIGNER: SOPHIE MIRANDA LEA





MODEL: IZZIE WILSON
PHOTOGRAPHY: DANNY WOODWARD
MAKE-UP: LEAH ROPER

MODEL: IZZIE WILSON
PHOTOGRAPHY: DANNY WOODWARD
MAKE-UP: LEAH ROPER





MODEL: IZZIE WILSON
PHOTOGRAPHY: DANNY WOODWARD
MAKE-UP: LEAH ROFER

Model: IZZIE WILSON
PHOTOGRAPHY: DANNY WOODWARD
MAKE-UP: LEAH ROYER



MODEL: DUCKY RICKMAN
PHOTOGRAPHY: ASH AHUJA
HAIR & MAKE-UP: DUCKY RICKMAN
RETOUCHER: DARYA ZAGORNAYA





MODEL: DUCKY RIGMAN
PHOTOGRAPH: ASH ARJUN
HAIR & MAKE-UP: DUCKY RIGMAN
RETOUCHER: DARYA ZAGORNAYA

MODEL: DUCKY RICKMAN
PHOTOGRAPHY: ASH AHUJA
HAIR & MAKE-UP: DUCKY RICKMAN
RETOUCHER: DARYA ZAGORNAYA



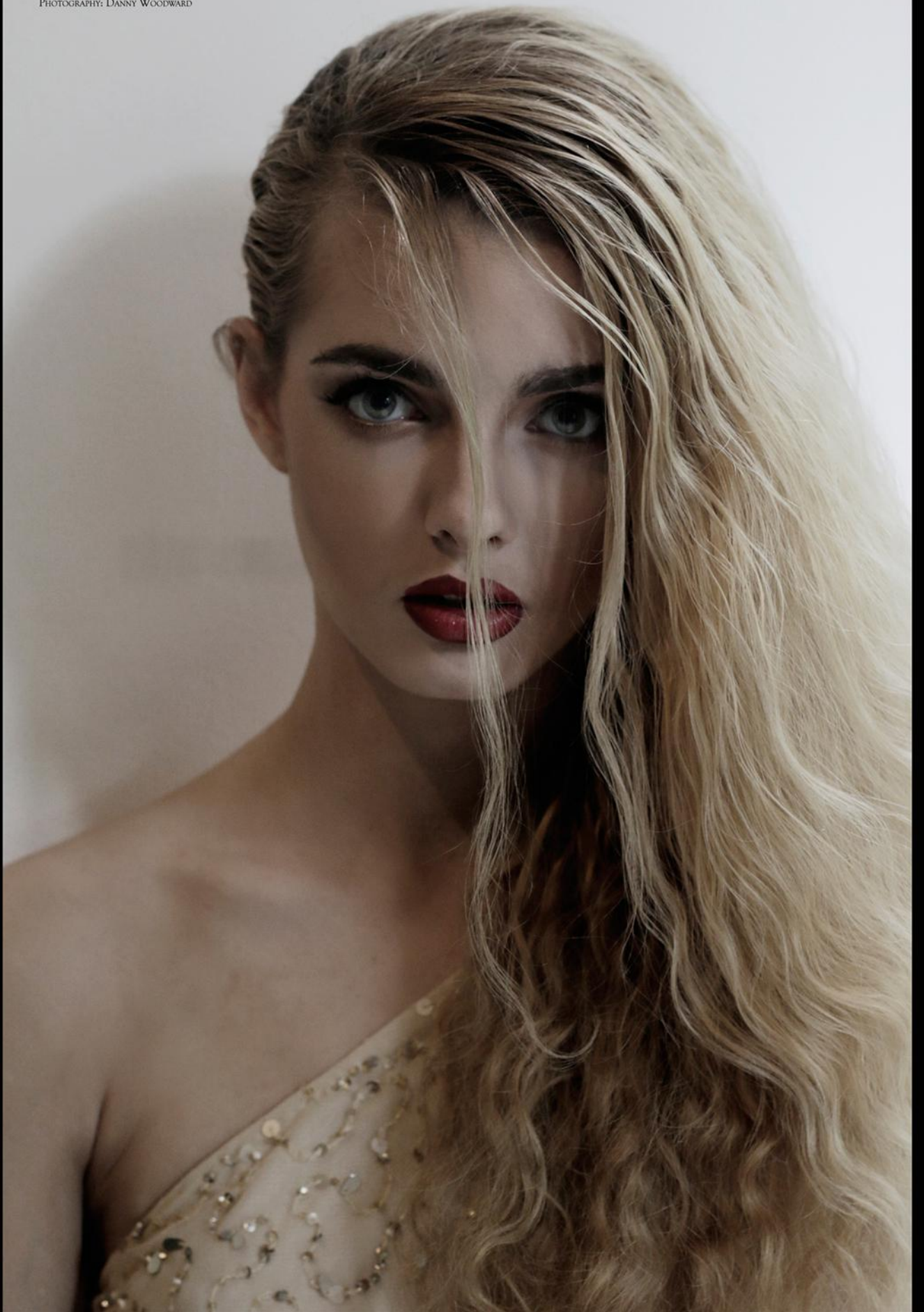


MODEL: DUCKY RICKMAN
PHOTOGRAPHY: ASH AHUJA
HAIR & MAKE-UP: DUCKY RICKMAN
RETOUCHER: DARIA ZAGORNAYA

MODEL: CHLOE MCKIERNAN
PHOTOGRAPHY: DANNY WOODWARD



MODEL: CHLOE MCKIERNAN
PHOTOGRAPHY: DANNY WOODWARD



A photograph of a woman lying on a vibrant red, draped fabric, possibly silk, in a dark environment. She is wearing a light-colored, lace-trimmed bra and matching underwear. Her right arm is raised above her head, and her left hand rests on her chest. She has a serene expression with her eyes closed or looking down. The lighting is dramatic, highlighting the texture of the fabric and her features.

MODEL: KERRY WAGG
PHOTOGRAPHY: MADAM VULTURE
MAKEUP: ERIKA DAWN SHELDON



Model: Kasey Wagg
Photography: Madam Vulture
Make-Up: Erika Dawn Sheldon

MODEL: KERRY WAGG
PHOTOGRAPHY: MADAM VULTURE
MAKE-UP: ERIKA DAWN SHELDON



MODEL: KASEY WAGG
PHOTOGRAPHY: MADAM VULTURE
MAKE-UP: ERIKA DAWN SHELDON





MODEL: LAURA ALICIA
PHOTOGRAPHY: TIM MANNING
HAIR STYLIST: JESSICA SHILLEY
MAKE-UP: CLARE JANE
STYLING: KAT HARRIS
WARDROBE: ANN SUMMERS



MODEL: KRISTA JARMAN "KRIST"
PHOTOGRAPHY: MICHELLE REYNOLDS CLIQUE BOUTIQUE
MAKE-UP: TIA NOEL OF S&S BEAUTY
WARDROBE: TIA MICHELLE LINGERIE AND SHIRI AUTRY COUTURE



Model: SINE SVENSSON
PHOTOGRAPHY: VALLENTINO V
HAIR & MAKE-UP: MARGO ZIEGLER



MODEL: SIGNE SVENSEN
PHOTOGRAPHY: VALLENTINOV
HAIR & MAKE-UP: MARGO ZHURM

MODEL: SIGNE SVENSEN
PHOTOGRAPHY: VALLENTINOV
HAIR & MAKE-UP: MARGO ZHURM



MODEL: SIGNE SVENSEN
PHOTOGRAPHY: VALLENTINOV
HAIR & MAKE-UP: MARGO ZHURM



MODEL: SIGNE SVENSEN
PHOTOGRAPHY: VALLENTINO V
HAIR & MAKE-UP: MARGO ZHURM





MODEL: SIGNE SVENSEN
PHOTOGRAPHY: VALLENTINO V
HAIR & MAKE-UP: MARGO ZHURM

MODEL: KRISTAL JARMAN "KRIST"
PHOTOGRAPHY: MICHELLE REDNAGLE CLIQUE BOUDOIR
MAKE-UP: TIA NOEL OF S&S BEAUTY
WARDROBE: TIA MICHELLE LINGERIE AND SHERI AUTRY COUTURE





MODEL: KRISTAL JARMAN "KRIST"
PHOTOGRAPHY: MICHELLE REINIGLE CLIQUE BOUTIQUE
MAKEUP: TIA NOEL OF SACS BEAUTY
WARDROBE: TIA MICHELLE LINGERIE AND SHERI AUTRY COUTURE



MODEL: KRISTAL JARMAN "KRIST"
PHOTOGRAPHY: MICHELLE REDNAGLE CLIQUE BOULDER
MAKE-UP: TIA NOEL OF S&S BEAUTY
WARDROBE: TIA MICHELLE LINGERIE AND SHERI ALTRY COUTURE



MODEL: KRISTAL JARMAN "KRIST"
PHOTOGRAPHY: MICHELLE REDNAGLE CLIQUE BOUDOIR
MAKE-UP: TIA NOEL OF S&S BEAUTY
WARDROBE: TIA MICHELLE LINGERIE AND SHERI AUTRY COUTURE

MODEL: NICA INA
PHOTOGRAPHY: PAUL WINSTONE
HAIR & MAKE-UP: MONICA MONTALVO
DESIGNER: EMILIA I LOVE FOUR SEASONS LONDON





MODELS: DANI KERR, NICA ISA & SOFIA TARCOVA
PHOTOGRAPHY: PAUL WINSTONE
HAIR & MAKEUP: MONICA MONTAUDO
DESIGNER: EMILIA I LOVE FOUR SEASONS LONDON

MODELS: DANI KERR, NICA INA & SOFIA TARGOVA
PHOTOGRAPHY: PAUL WINSTONE
HAIR & MAKE-UP: MONICA MONTALVO
DESIGNER: EMILIA I LOVE FOUR SEASONS LONDON



MODEL: DANI KERR
PHOTOGRAPHY: PAUL WILSON
HAIR & MAKE-UP: MONICA MONTALDO
DESIGNER: ELODIA I LOVE FOUR SEASONS LONDON



MODEL: SIMONE PALCOVA
PHOTOGRAPHY: PAUL WATKINS
HAIR & MAKEUP: MONICA MONTAUDO
DESIGNER: EMILIO TAVI FOR FOUR SEASONS LONDON



MODEL: SARA TERESA
PHOTOGRAPHY: PAUL WINTON
HAIR & MAKE-UP: MONICA MONTALDO
DESIGNER: EMILIA LOVE FOUR SEASONS LONDON



MODEL: NIKKITA CHADHA
PHOTOGRAPHY: PAUL WINSTONE
HAIR & MAKE-UP: MONICA MONTALVO
DESIGNER: EMILIA I LOVE FOUR SEASONS LONDON



MODEL: NIKKITA CHADHA
PHOTOGRAPHY: PAUL WINSTONE
HAIR & MAKE-UP: MONICA MONTALVO
DESIGNER: EMILIA I LOVE FOUR SEASONS LONDON





MODEL: VALENTINA KALBA ZEN
PHOTOGRAPHY: PAUL WINSTONE
HAIR & MAKE-UP: MONICA MONTALVO
DESIGNER: EMILIA I LOVE FOUR SEASONS LONDON

MODELS: MICHAELA MAPLE & NIKKITA CHADHA
PHOTOGRAPHY: PAUL WINSTONE
HAIR & MAKE-UP: MONICA MONTALVO
DESIGNER: EMILIA I LOVE FOUR SEASONS LONDON



MODEL: VALENTINA KÁLIKÁ ZEN
PHOTOGRAPHY: PAUL WINSTONE
HAIR & MAKE-UP: MONICA MONTALVO
DESIGNER: EMILIA I LOVE FOUR SEASONS LONDON



MODEL: ANGELINA KALI
PHOTOGRAPHY: PAUL WINSTONE
HAIR & MAKE-UP: MONICA MONTAIVO
DESIGNER: EMILIA I LOVE FOUR SEASONS LONDON



MODEL: VALENTINA KÄLIKÄ ZEN
PHOTOGRAPHY: PAUL WINSTONE
HAIR & MAKE-UP: MONICA MONTALVO
DESIGNER: EMILIA I LOVE FOUR SEASONS LONDON



MODEL: ANGELINA KALI
PHOTOGRAPHY: PAUL WINSTONE
HAIR & MAKE-UP: MONICA MONTAIVO
DESIGNER: EMILIA I LOVE FOUR SEASONS LONDON



MODEL: ANGELINA KALI
PHOTOGRAPHY: PAUL WINSTONE
HAIR & MAKE-UP: MONICA MONTAIVO
DESIGNER: EMILIA I LOVE FOUR SEASONS LONDON



MODEL: MICHAELA MAPLE
PHOTOGRAPHY: PAUL WINSTONE
HAIR & MAKE-UP: MONICA MONTALVO
DESIGNER: EMILIA I LOVE FOUR SEASONS LONDON



Model: BECK
Photography: DURAN LEVINSON



MODEL: BECK
PHOTOGRAPHY: DURAN LEVINSON



MODEL: BECK
PHOTOGRAPHY: DURAN LEVINSON



MODEL: BECK
PHOTOGRAPHY: DURAN LEVINSON



MODEL: CHLOE MCKIERNAN
PHOTOGRAPHY: DANNY WOODWARD



MODEL: CHLOE MCKIERNAN
PHOTOGRAPHY: DANNY WOODWARD



MODEL: CHLOE MCKIERNAN
PHOTOGRAPHY: DANNY WOODWARD



MODEL: CHLOE MCKEEMAN
PHOTOGRAPHY: DANNY WOODWARD

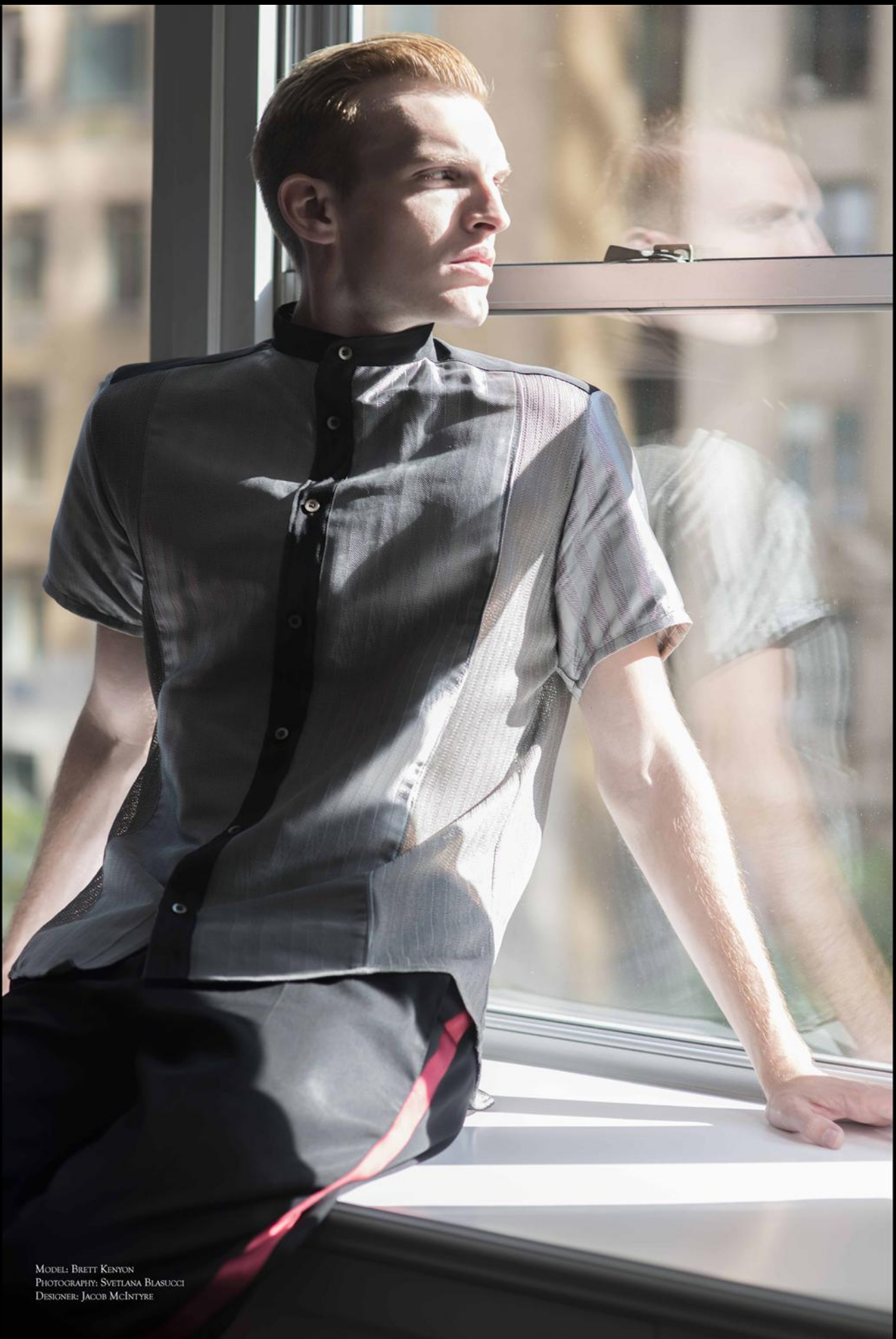


MODEL: CHLOE MCKIERNAN
PHOTOGRAPHY: DANNY WOODWARD





MODEL: CHLOE MCKIERNAN
PHOTOGRAPHY: DANNY WOODWARD



MODEL: BRETT KENYON
PHOTOGRAPHY: SVETLANA BLASUCCI
DESIGNER: JACOB MCINTYRE

MODEL: LISA RUMBALSKI
PHOTOGRAPHY: SVETLANA BLASUCCI
DESIGNER: JACOB MCINTYRE



MODEL: LISA RUMBALSKI
PHOTOGRAPHY: SVETLANA BLASUCCI
DESIGNER: JACOB MCINTYRE





MODEL: BRETT KENYON
PHOTOGRAPHY: SVETLANA BLASUCCI
DESIGNER: JACOB MCINTYRE

Mo
Pri
Des

MODELS: SYDNEY DAVID & BRETT KENYON
PHOTOGRAPHY: SVETLANA BLASUCCI
DESIGNER: JACOB MCINTYRE



MODEL: LISA RUMBALSKI
PHOTOGRAPHY: SVETLANA BLASUCCI
DESIGNER: JACOB MCINTYRE



MODELS: LISA RUMBALSKI & BRETT KENYON
PHOTOGRAPHY: SVETLANA BLASUCCI
DESIGNER: JACOB MCINTYRE



MODEL: SYDNEY DAVID
PHOTOGRAPHY: SVETLANA BLASUCCI
DESIGNER: JACOB MCINTYRE



COVER IMAGE:

MODEL: RACHEL INGVALSON
PHOTOGRAPHY: JEFF KAPPEL
HAIR & MAKE-UP: KARLA AYALA
WARDROBE: JOSE AYALA